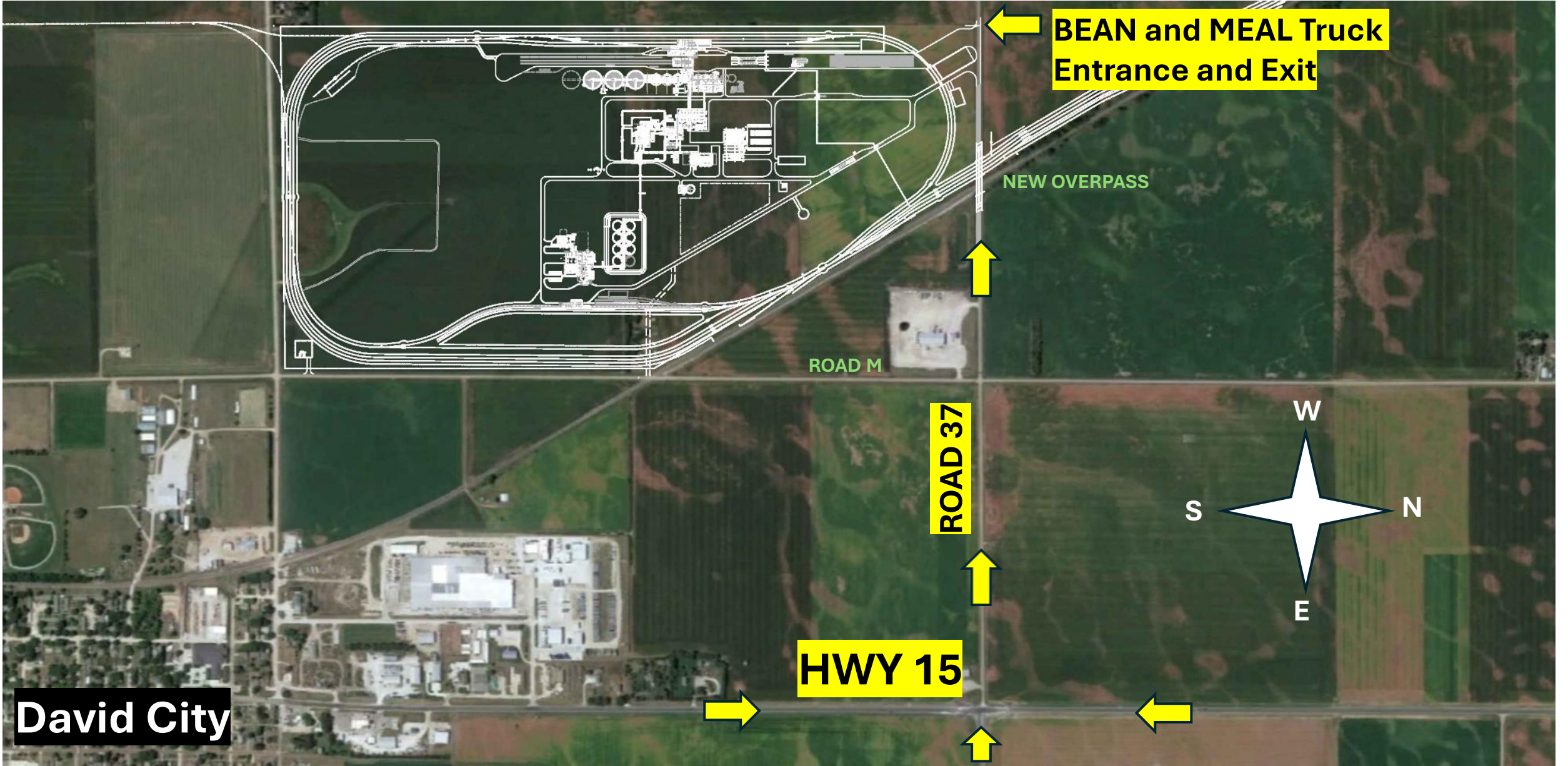
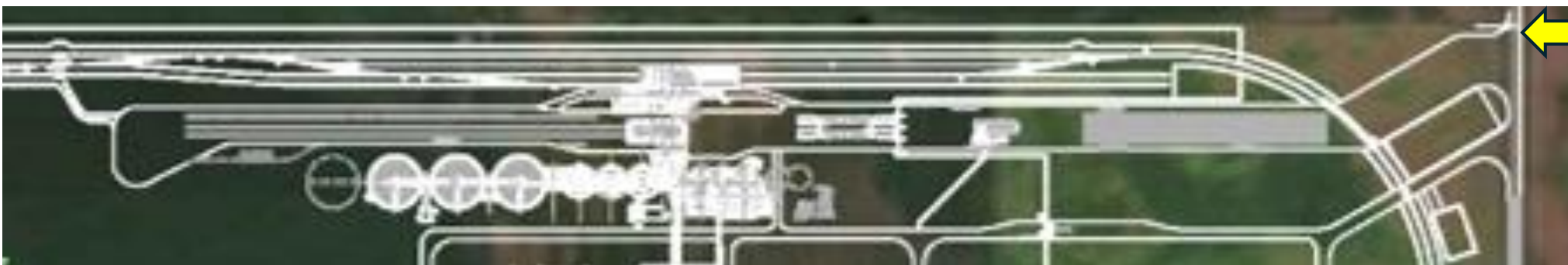


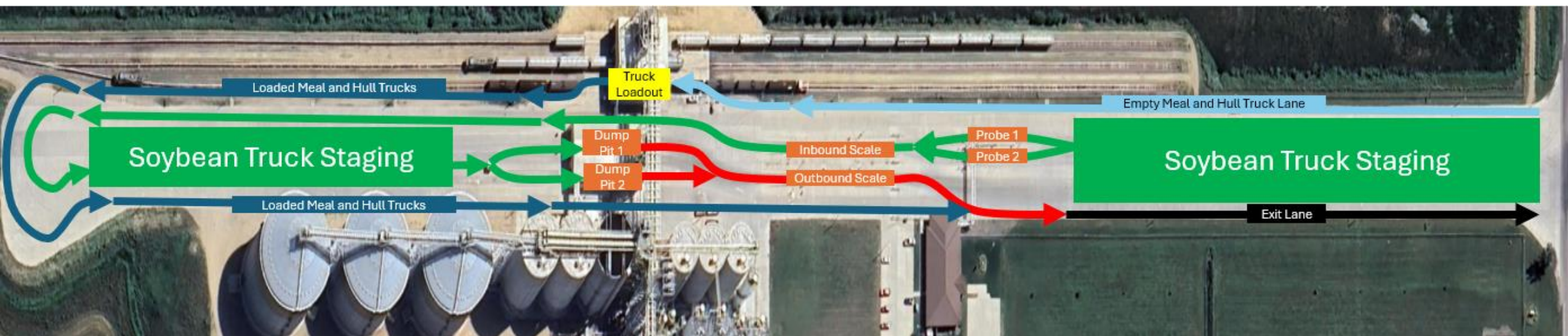
# David City - Soy Processing Facility & Degumming Facility



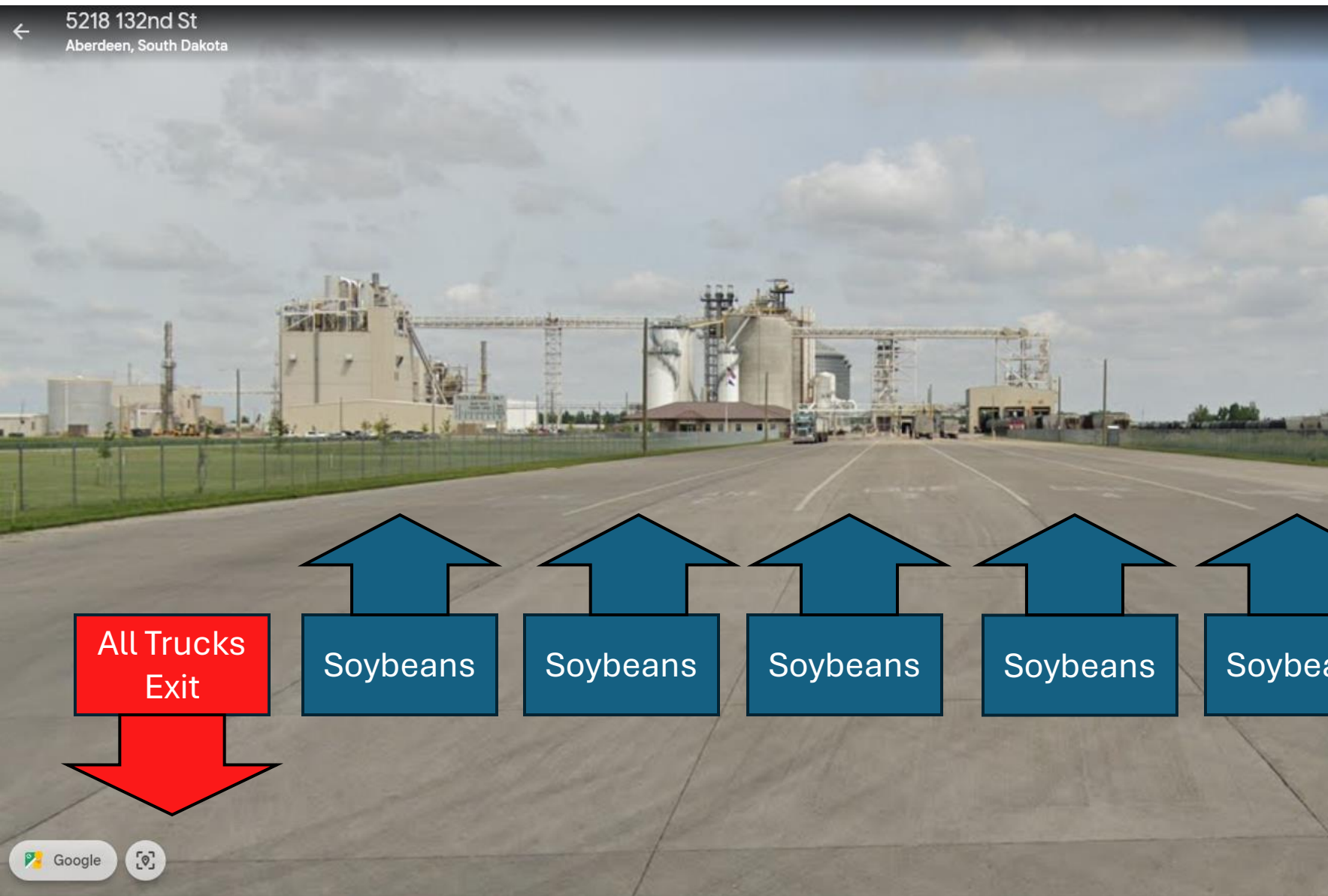




**BEAN and MEAL  
Truck Entrance and  
Exit for David City**



# Soybean and Meal Truck Entrance and Exit





# Soybean Dump Procedures – Staging Area

- While sitting in the staging area drivers should complete their AGP Fastlane application.



Verizon 9:52 AM 86%  
Cancel AGP Ag Processing Inc Clear

Customer  
Elevator Company Name

Origin  
Town, State

Prior Load  
CORN

Plate Number  
NE 12-3456 / 78-9101

Farm/Producer (Optional)  
50 Joe / 50 Bill

Net Weight (Lbs) (Optional)  
60000

BOL (Optional - 12 characters limit)  
12-3456

Complete

Save As Template

# Soybean Dump Procedures - Probe

- Loaded soybean trucks will first pull up to 1 of the 2 Automatic probes.
- For each delivery, the driver will need to grab a new card and swipe it across the card reader.
- The driver will then pick up the phone to tell the grader his name. If the driver did not utilize the AGP Fastlane app they will need to give the rest of their load information to the grader at this time.
- Truck will then be probed and graded and wait for the green light before proceeding to the inbound scale.



# Soybean Dump Procedures – Inbound Scale

- After getting the green light at the probe the truck will advance to inbound (west) scale.
- The driver will then swipe their card again to verify there are on scale and wait for the green light.
- Once the Green light has been given the truck can advance to the south side of the dump pits.





# Soybean Dump Procedures – Dump Pits

- Trucks will enter the dump pits from the south.
- From the inbound scale, trucks will drive past the pits through the alleyway on the west side of the dump building.
- They will then continue all the way to the south end of the concrete pad, turn around and get in line to dump in front of either one of the two dump pits.
- These pits are extra long and wide, so there should be little to no clean up for each truck.



# Soybean Dump Procedures – Outbound Scale

- Once the truck has finished dumping, they can pull off the pit and onto the outbound scale.
- On the scale, the driver will swipe their card one more time and the ticket will finalize.
- Drivers will then place their swipe card into a dump bucket so we can reuse them for other trucks.
- A printer will then kick out a ticket and the truck can pull off the scale and use the far east lane to exit AGP.
- All Trucks must double check all ticket information on the ticket before leaving the facility.





